

PISCO-PERU EARTHQUAKE, AUGUST 15th, 2007

HYPOCENTRO: 13.39°S, 76.57°W, 39Km depth

STATION: ANCÓN LOCATION: ANCÓN, 11.776°S, 77.150 °W, 78m

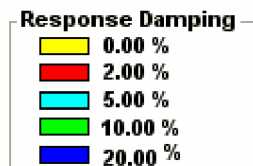
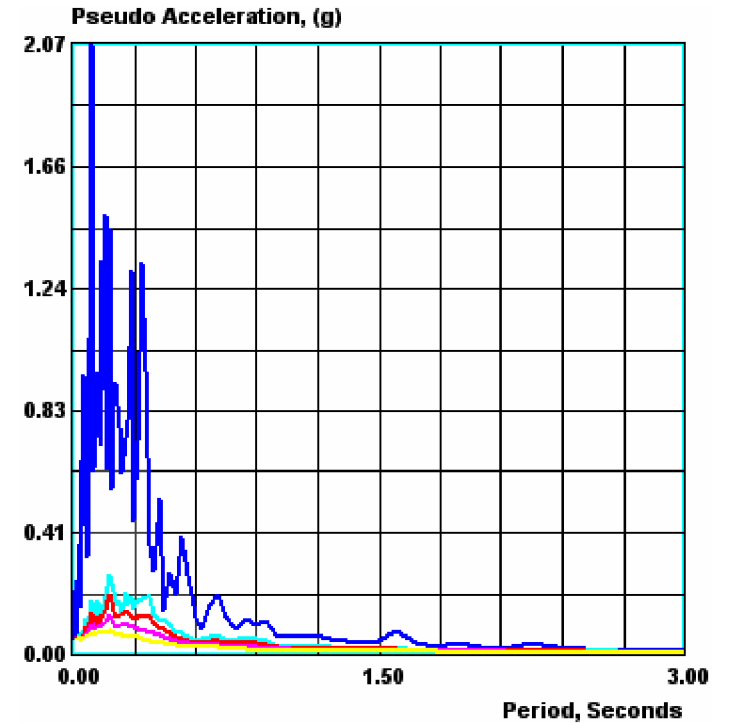
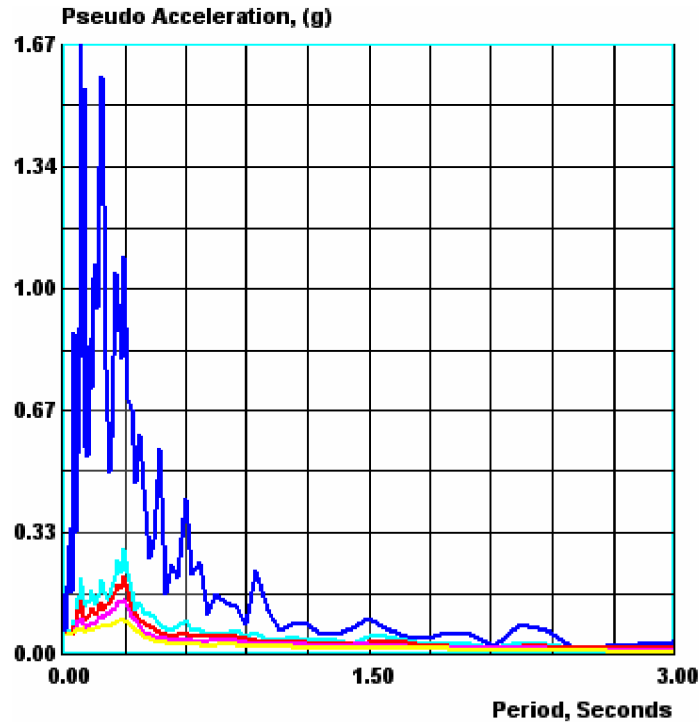
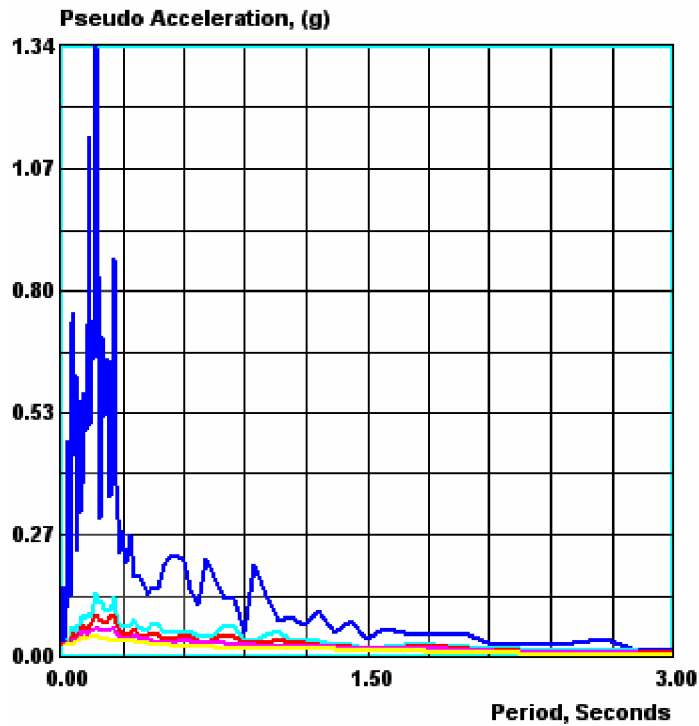
EPICENTRAL DISTANCE: 186Km

RESPONSE SPECTRUM

VERTICAL

TRANSVERSAL

LONGITUDINAL



CERESIS: Centro de Procesamiento