

**PISCO-PERU EARTHQUAKE, AUGUST 15th, 2007**

HYPOCENTRO: 13.39°S, 76.57°W, 39Km depth

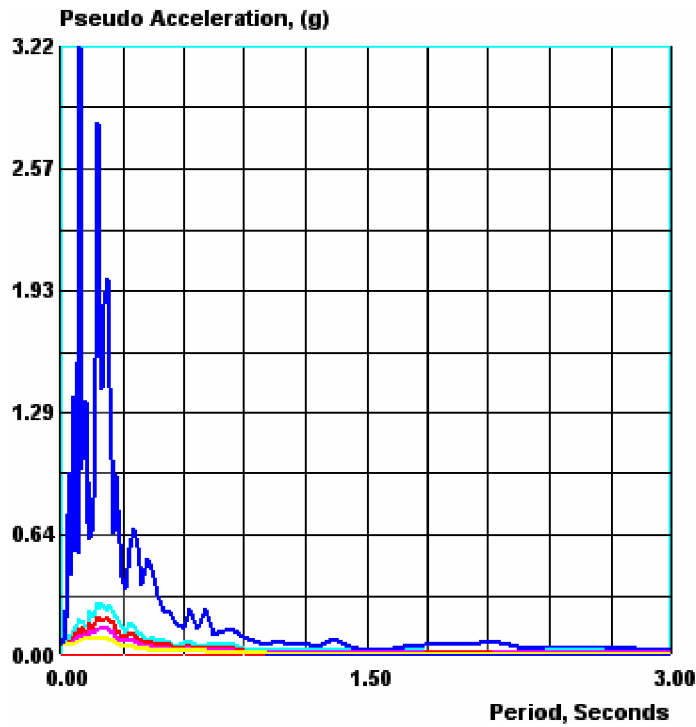
STATION: **RINCONADA**

LOCATION: LIMA, 12.087°S, 76.923 °W, 262m

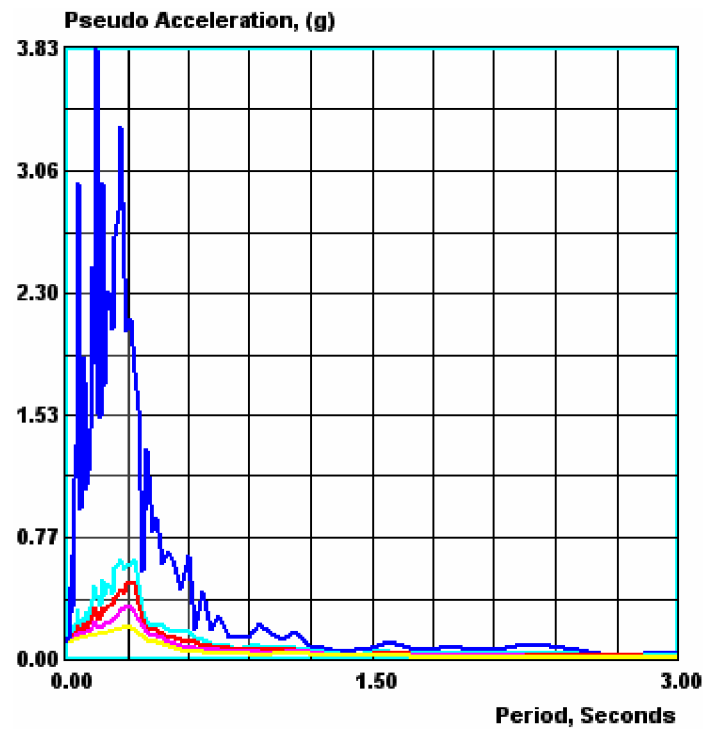
EPICENTRAL DISTANCE: 146Km

**RESPONSE SPECTRUM**

VERTICAL



TRANSVERSAL



LONGITUDINAL

