

PISCO-PERU EARTHQUAKE, AUGUST 15th, 2007

HYPOCENTRO: 13.39°S, 76.57°W, 39Km depth

STATION: ÑAÑA

LOCATION: ÑAÑA, 11.987°S, 76.839°W, 575m

EPICENTRAL DISTANCE: 154Km

RESPONSE SPECTRUM

VERTICAL

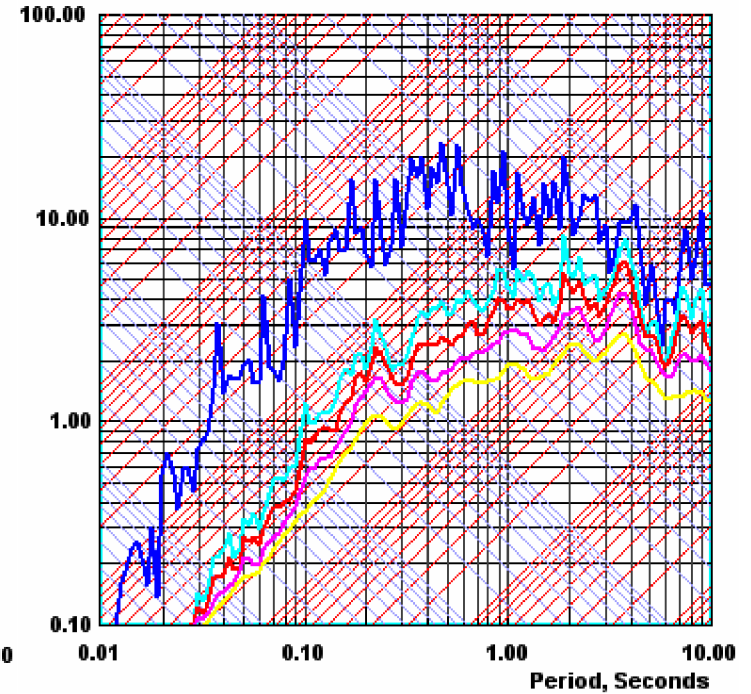
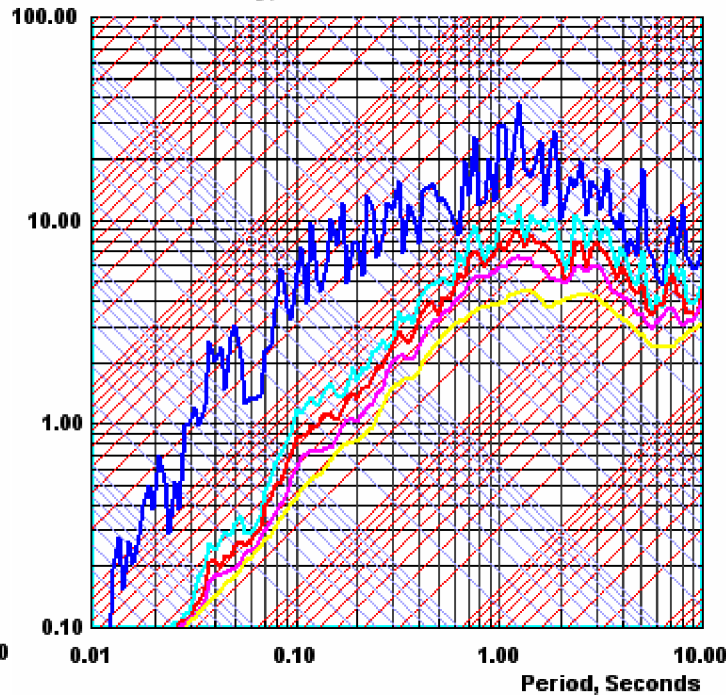
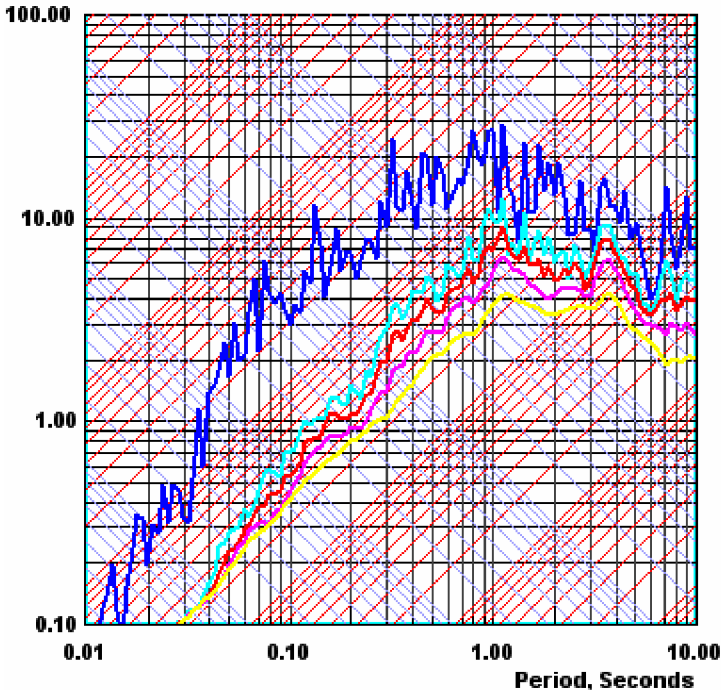
TRANSVERSAL

LONGITUDINAL

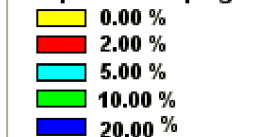
Pseudo Velocity, cm/s

Pseudo Velocity, cm/s

Pseudo Velocity, cm/s



Response Damping



CERESIS: Centro de Procesamiento